

In- Ground Housing Unit



RAMSÉS



IMPORTANT: The instruction manual that you are holding in your hands contains important information about the safety measures to adopt during installation, start up and maintenance. Thus, it is extremely important that both the installer and the user read the instructions before beginning setup.

ATTENTION !!

Anyone working on the installation must have the required qualifications for this type of work.

Avoid contact with electrical voltage.

The normatives in force for accident prevention must be followed.

IEC standards 3647702 must be complied with: ELECTRICAL INSTALLATIONS OF BUILDINGS. SPECIAL INSTALLATIONS. SWIMMING POOLS.

Any maintenance operation or part replacement must be done with the SPA disconnected from the mains.

Do not handle the equipment with wet feet.

This equipment CANNOT BE CONNECTED TO A REGULAR PLUG. This equipment REQUIRES PROPER ELECTRICAL INSTALLATION. This must be done by a specialist, following all the normatives on electrical safety in force in each country.

The supply to the unit must ALWAYS BE PROTECTED BY A HIGHLY-SENSITIVE DIFFERENTIAL.

An EARTHING CONNECTION is required.

Use a SECTION CABLE with the appropriate power for the unit and for the distance to the control panel.

Use a lock or padlock so that children or other unauthorised persons cannot access the interior of the unit.

ALWAYS STOP THE PUMP BEFORE CHANGING THE POSITION OF THE SELECTOR VALVE. Do not open the cover of the spa when it may be caught by a current or gust of wind.

The manufacturer is exempt from all liability due to improper assembly, installation, start up or any changes or incorporations of any non-authorised electrical components.

For optimum performance of your in-ground housing unit, follow the instructions below.

1. GENERAL CHARACTERISTICS

In-ground housing unit for a pool is made of injected-polymer reinforced with fibreglass and a cover.
It houses a D550 Aster filter and a Sena 1CV circulation pump.

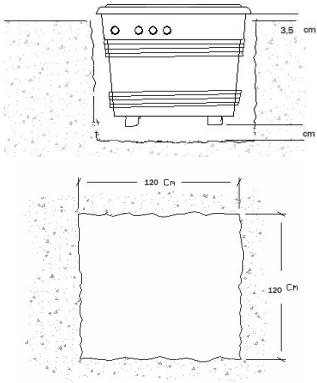


2. LOCATION

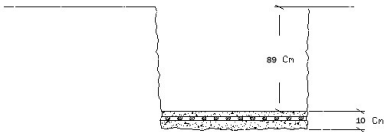
It is advisable to situate the equipment away from the pool, at least 3.5 m from the edge. During installation, follow IEC international standard 60364-7-702 on the Requirements for special installations or locations. Section 702: Swimming pools and other basins.

3. INSTALLATION ON CONCRETE

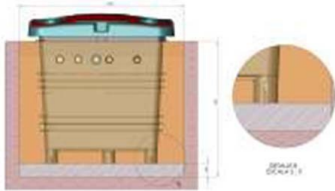
3.1. Do the excavation in stages.



3.2. Make a properly levelled concrete slab.



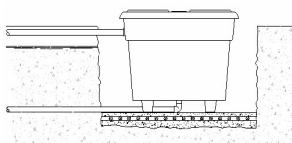
3.3. -Position the unit



3.4. Do the excavation to prepare for laying the intake and output tubes to the pool and the electrical supply.

The intake and output tubes must rest on a bed of sand.

It is recommended that you make a drain in the back of the unit using the knock-out to make the hole. This should be connected to the general tank with a slight slope.

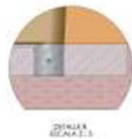
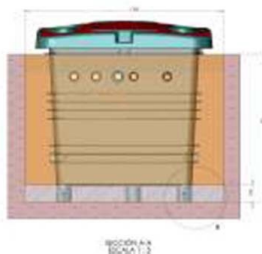


3.5.- Perforate the unit on the side where the electrical supply is to enter, with a diameter that matches the cable to be installed. Determine the section of the cable depending on power consumption and drops in voltage.

Install a cable gland of the appropriate size for the cable section at the entry.

4. INSTALLATION OF THE LEGS IN THE CONCRETE

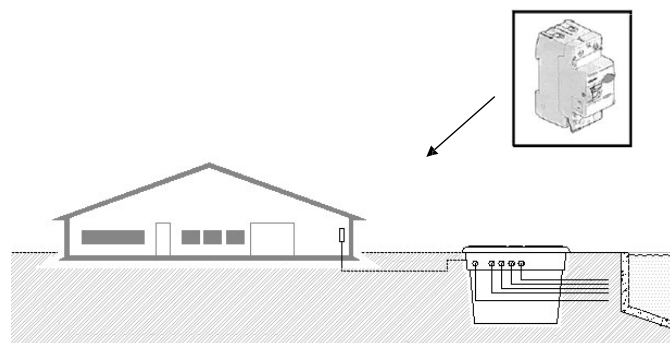
4.1. - This makes for more accurate levelling. The unit should be put in place when the concrete floor begins to set and levelled by the upper part. The legs should be drilled to insert rods so the unit is fully anchored to the concrete, without the possibility of moving when pressure is applied to the sides.



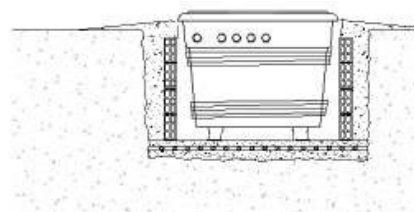
5

IMPORTANT:

The installation must include a highly sensitive 2 pole differential on the general panel (conforming to RBT ITC-BT-017). The differential is not supplied with the spa.



To avoid flooding, fill with dirt, forming a slight incline.



6

IMPORTANT



ATTENTION – VERY IMPORTANT

This equipment cannot be connected to a regular plug.
 This equipment requires proper electrical installation. This must be done by specialist, following all the normatives on electrical safety in force in each country.
 The supply to the unit must always be protected by a highly-sensitive differential.
 An earthing connection is required.
 Use a section cable with the appropriate power for the unit and for the distance to the control panel

5. ELECTRICAL CONNECTIONS



Instakes from the pool

- Skimmer
- Drain input
- Suction

Drain output

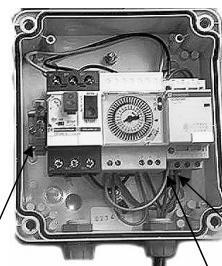
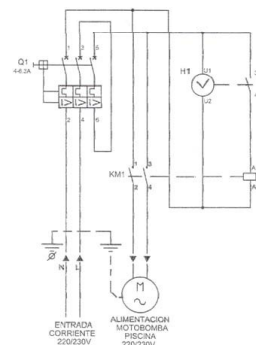
Return to pool

7

8

ELECTRICAL CONNECTION (ONLY FOR MODELS WITH ELECTRICAL CONTROL BOX)

For your safety, place terminals that are appropriate to the section of the cables on the ends of the cables to be connected. Use cable H07RNF.



GROWN

PHASE

NEUTRAL

4. STARTING UP



1. Remove the cover of the unit to begin the start up. Unscrew the 6 screws that affix the hinge to the cover- not those that affix the hinge to the unit- before lifting it.

CONSULT THE MANUAL FOR THE FILTER

2. Open the filter and fill it halfway with water. Protect the diffuser in the interior of the filter so sand does not get into it.

3. Fill the filter with the appropriate quantity (indicated on the specifications label, or up to 2/3 of the total filter height) of silex sand with a grain size of 0.4 - 0.8

4. Clean the remnants of silex from the mouth, cover and gasket housing, and close the filter. For more information, please consult the manual for the filter.

If the unit is below the water level, you will only need to open the input and output valves and the air vent until the filter and the pump are full of water.

5. Put the valves in the following positions:

- SKIMMER OPEN
- DRAIN INPUT OPEN
- POOL CLEANER OPEN
- RETURN OPEN
- SELECTOR VALVE CLEAN

6. Start up the pump and clean the filter.

Run the cleaning until you see that the water is clean and clear in the window on the selector valve.

7. Turn off the pump.

Position the selector valve to rinse and run the pump for about 15 seconds. Stop the pump again and put the selector valve on filter.

8. Close the selector valve of the pool cleaner.

9. Connect the pump.

Note: Any changing of the position of the selector valve must be done with the pump stopped. Otherwise, the filter or the installation could be damaged.

Replace the cover of the unit, affixing the rear part with the corresponding screws.



ATTENTION

- IT IS RECOMMENDED THAT YOU USE A LOCK OR PADLOCK SO THAT CHILDREN OR OTHER UNAUTHORISED PERSONS CANNOT ACCESS THE INTERIOR OF THE UNIT

PROGRAMMING THE FILTER. See instructions for the programmer in the interior of the control panel.

ONLY FOR MODELS WITH AN ELECTRICAL CONTROL PANEL



ATTENTION

ALWAYS STOP THE PUMP BEFORE CHANGING THE POSITION OF THE SELECTOR VALVE

5.1.- FILTRATION

With the pump stopped, put the selector valve handle on FILTER.
Start up the pump.
Periodically check the manometer during operation, which will indicate the degree of saturation of the filter.

5.2.- CLEANING

The solid particles in the pool that are collected by the input drain and the skimmers remain in the sand in the filter, which constantly decreases the water flow. Due to this, the pressure increases progressively. When the pressure reaches 1.3 kg/cm^2 , a CLEANING will be done (this is an approximation; it depends on the distance between the unit and the pool, its location, etc.).
Proceed as follows:
Put the selector valve on the CLEAN position and start the pump. Run this for 2 minutes. Always check the window of the selector valve to ensure that this is the correct time, since it depends on the amount of filth accumulated in the filter.



5.3.- RINSING

After CLEANING the filter and before returning the equipment to filtration, it is advisable to run a RINSE to prevent the first quantity of water that is still cloudy from going directly into the pool. To do this, with the pump stopped, put the selector valve on RINSE. Start up the pump and run it for about a minute. Always check the window of the selector valve to ensure that this is the correct time, since it depends on the amount of filth accumulated in the filter.

5.4.- CIRCULATION

When you put the selector valve in this position, the water from the pump will circulate directly to the pool without passing through the filter.

5.5.- DRAINING

If the pool does not have a drain in the bottom, it can be emptied using the filter pump by putting the valve on DRAIN. To do this, open the valves of the input drain and close those of the skimmers and pool cleaner.

5.6.- LOCKED

This position blocks water entry into the filter

WARRANTY

All of our products come with a TWO YEAR warranty from the date of delivery. Our warranty includes in-factory repair and replacement or on the after-sale service of defective pieces. The parts replaced or repaired under this warranty will not extend the warranty of the original product, but they will have their own warranty.

For the warranty to be valid, the buyer must have proof of the date of sale and reception of the product.

For the warranty to be valid, the buyer must strictly follow the manufacturer's instructions included in the documentation that comes with the product, whenever applicable according to the range and model of the product. No warranty covers normal wear and tear due to use of the products.

As for the parts, components and/or disposable materials, it will be laid out in the documentation that comes with the product, where applicable.

The warranty does not cover the following: 1. The product has been misused; 2. The product has been repaired or handled by an unauthorised person; 3. The product has been repaired or maintained with non-original parts, or 4. The product has been installed or set up incorrectly.

Except where prohibited by legislation, the shipping and return costs of defective materials shall be paid by the buyer. The present warranty does not limit or infringe upon the rights that correspond to consumers as covered by imperative national regulations.

MANUFACTURER

METALAST,S.A.U

Passeig de Sanllehy,25
08213 Polinyà, Spain
Tel. +34 93 713 18 55
Fax. +34 93 713 41 11

WE RESERVE THE RIGHT TO CHANGE THE SPECIFICATIONS, ALL OR IN PART, OF OUR PRODUCTS OR THE CONTENT OF THIS DOCUMENT WITHOUT PRIOR NOTICE.